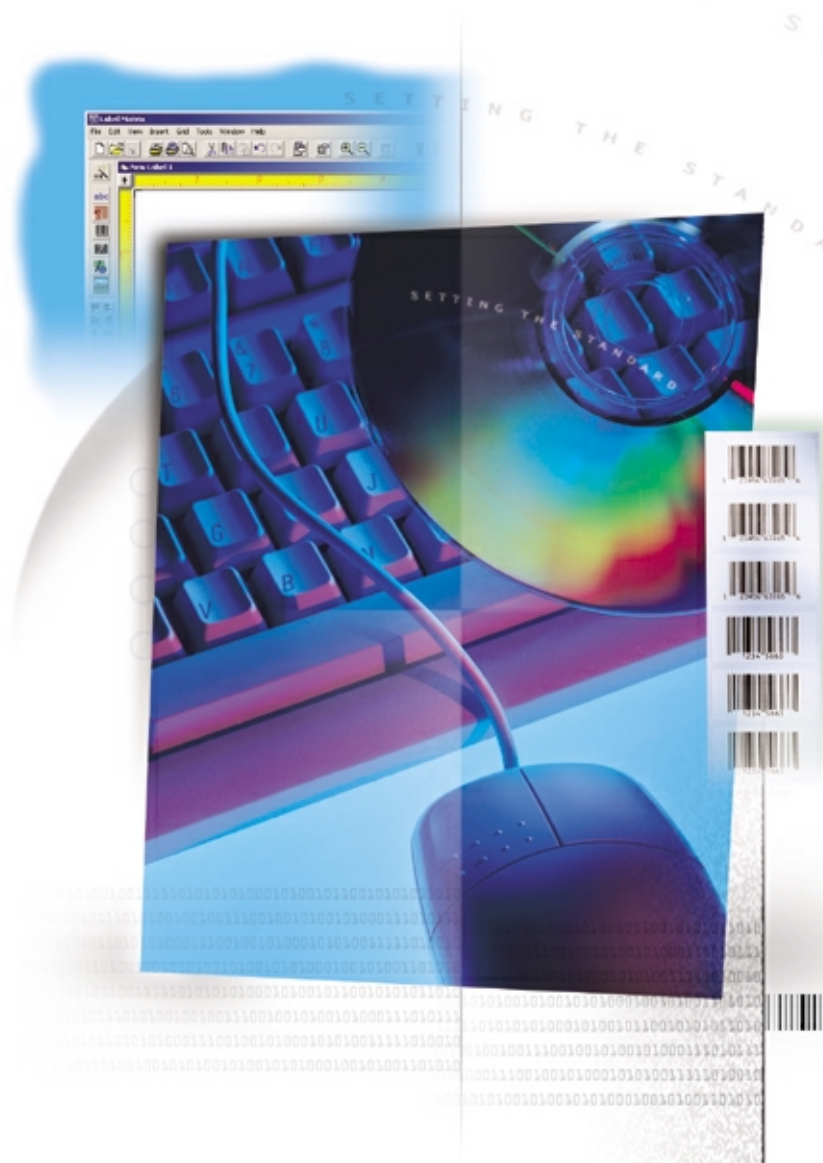


TEKLYNX®

# LABEL MATRIX®

SETTING THE STANDARD

VERSION 7



BAR CODE LABELING AND INTEGRATION SOFTWARE

[按此連結 Click Here](#)



天時科技有限公司

**ACTION-PLUS CO., LTD**

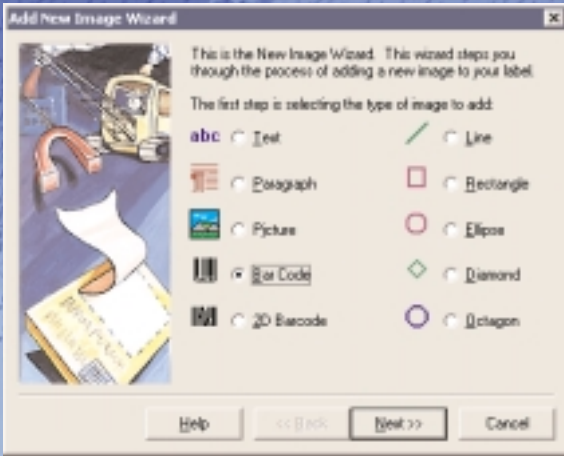
Tel : (852) 2803 0306

Fax : (852) 2887 2892

Email : [sales@action-plus.com.hk](mailto:sales@action-plus.com.hk)

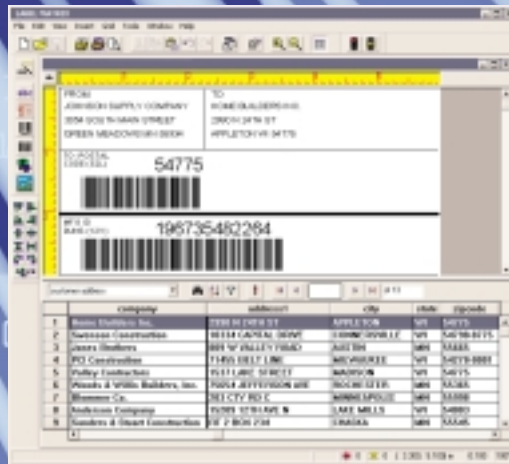
Website: [www.action-plus.com.hk](http://www.action-plus.com.hk)

# SIMPLE



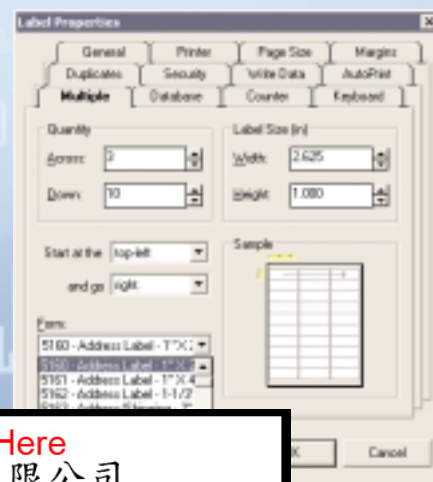
Wizards make the design process simple by giving you step-by-step instructions while providing helpful hints.

# FLEXIBLE



The Data Grid lets you view records live on the design screen making record selection and label printing flexible, easy and fast.

# FEATURE-PACKED



按此連結 [Click Here](#)  
**天時科技有限公司**  
**ACTION-PLUS CO., LTD**  
Tel : (852) 2803 0306  
Fax : (852) 2887 2892  
Email : [sales@action-plus.com.hk](mailto:sales@action-plus.com.hk)  
Website: [www.action-plus.com.hk](http://www.action-plus.com.hk)

you can easily  
or create a  
eling need.

# LABEL MATRIX® 7

## Simple, Flexible Bar Code Labeling and Integration Software

LABEL MATRIX 7—FEATURE-PACKED AND EASY TO USE.

### True WYSIWYG Imaging 1

Eliminates guesswork by ensuring labels print exactly as they appear on your screen.

### Multi-Document Interface 2

Displays several label design windows concurrently.

### Label Templates and Samples 3

Includes over 100 compliance label templates and label samples.

### Label Design, Printing & Database Wizards 4

Helpful wizards walk you through each step of the label creation process.

### Rich Text Format Editing 5

Make use of existing documents from Microsoft Word and other word processing or desktop publishing programs.

### Variety of Shapes 6

Lines, rectangles, circles, ellipses and octagons can be created in any size or color.

### Graphic Images Capability 7

Lets you import and size multiple types of graphic images.

### Alignment Tools 8

Easily align groups of images with the click of a button.

### Database Connectivity 9

Access database records sequentially or through an unlimited number of "key" database search fields.

### Variable Field Capability 10

Allows for date, time and serial (counter) stamps, plus keyboard input prompts and linked/combo expressions.

### Linear and 2D Symbologies 11

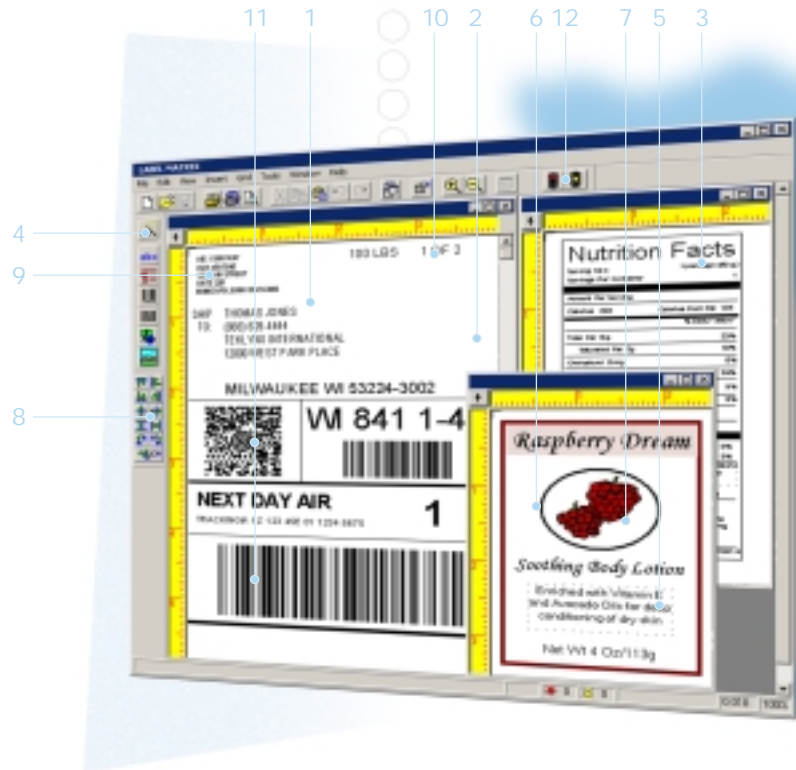
Support for over 34 linear symbologies and 12 2D symbologies.

### Label Design Error & Warning Tools

Warns you of potential problems with your label design.

LABEL MATRIX 7 labeling software gives you the power to design and print labels with ease and flexibility to meet your most demanding labeling needs.

Whether you need address labels for your small business or thousands of inventory labels for a multi-site warehousing plant, LABEL MATRIX can do the job.



## Advanced Label Design with Unparalleled Ease of Use.

**Easy to Learn and Use** even for beginners—familiar Windows icons, tab dialogs and a drag-and-drop interface make LABEL MATRIX instantly recognizable to anyone who has used a Windows software package.

**Comprehensive Bar Code Support** for over 45 symbologies including Code 39, Code 128, UPC A, UPC E, UCC/EAN-128, PDF 417, Data Matrix, MaxiCode, RSS-14 Composites and more.

**Database Connectivity Options** include 32-bit OLE DB support for Access, ASCII, dBase, Excel, FoxPro, ODBC, SQL server and others.

**Enhanced Printer Support** for more than 1000 thermal and thermal transfer printers, as well as any Windows printer, allows you to maximize your printer's performance and print large runs of labels in a very short time.

**Advanced Integration Features** for automating print jobs (AutoPrint), logging with other programs via

按此連結 **Click Here**  
天時科技有限公司  
**ACTION-PLUS CO., LTD**  
Tel : (852) 2803 0306  
Fax : (852) 2887 2892  
Email : sales@action-plus.com.hk  
Website: www.action-plus.com.hk

# LABEL MATRIX<sup>7</sup>

(Windows 95, 98, ME, NT 4.0, 2000 and XP compliant)

FEATURE	LABEL MATRIX QuickDraw	LABEL MATRIX	LABEL MATRIX PowerPro
<b>General</b>			
Multiple language editions available	•	•	•
Support for long filenames	•	•	•
Network version available		•	•
<b>Label Design</b>			
Change colors, fonts and resize images with ease	•	•	•
Easily insert bar codes, text, paragraphs, lines, shapes and graphics	•	•	•
Design custom shapes including ellipses, circles, ovals, diamonds and octagons	•	•	•
Preview thumbnail label designs and descriptions before opening	•	•	•
Over 100 compliance label templates included		•	•
PowerWrap automatic paragraph sizing and scale to fit		•	•
Bulleted & numbered lists with hanging indent options		•	•
Multiple Undo/Redo ability	single	•	•
Clip art library included			•
<b>Bar Codes</b>			
Support for over 34 linear bar codes	•	•	•
UCC/EAN-128 & MaxiCode wizards		•	•
2D support including Aztec, Aztec Mesa, Data Matrix, MaxiCode, PDF 417, RSS-14 Composite and others		•	•
Extended 2D support including TLC39 and QR Code			•
<b>Data Origins</b>			
Fixed/Constant	•	•	•
Keyboard entry at print time with no double entry (verification) ability	•	•	•
Picklist "drop-down" data entry for easy and accurate selection of data	•	•	•
Data retrieved from a database file	•	•	•
Counters/serial numbers with support for alpha/numeric and custom numbering	no custom	•	•
Date and time stamping using multiple formats	•	•	•
Combination origin for advanced math, string and logical functions		•	•
<b>Databases</b>			
Data Grid for viewing database records "live" on the design screen	•	•	•
Directly edit database records in Data Grid			•
32-Bit OLE DB database support	•	•	•
Sequential and keyed database access	sequential only	•	•
SQL query capability		•	•
Retrieve data from an unlimited number of database files per label	one per label	•	•
Includes separate database utility program		•	•
<b>Printing</b>			
Windows driver printer support	•	•	•
High speed driver support for over 1000 thermal and thermal transfer printers		•	•
Variable duplicate count from any origin	•	•	•
<b>Tools</b>			
Automatic printing from a source database		•	•
Command line support		•	•
Export image and variable information to a data file		•	•
User-definable reports generated from label log files			•
Print labels directly from label preview/description screen			•
Printer Control Language label conversion utility			•
RFID Tag support			•
Print pre-designed labels from within your own programs using Dynamic Data Exchange (DDE)			•

## Choose the Leader.

LABEL MATRIX is one of TEKLYNX's globally recognized label design software solutions, providing you with the flexibility to handle all of your labeling applications—today and in the future.

Setting the Standard  
**TEKLYNX** 

United States  
1-414-577-3900

Copyright 2002 Bratton Group  
of Bratton Groupe s.a.

LM70BROC

按此連結 **Click Here**

**天時科技有限公司**  
**ACTION-PLUS CO., LTD**

**Tel : (852) 2803 0306**  
**Fax : (852) 2887 2892**  
**Email : sales@action-plus.com.hk**  
**Website: www.action-plus.com.hk**



Japan

1-45-461-3603

are registered trademarks  
of their respective owners.

**Microsoft**  
CERTIFIED  
Partner