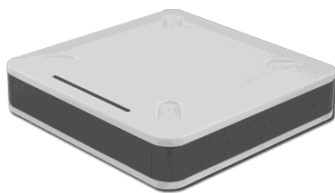


RF-2000MF-RW Mifare Card Reader Writer

Product Features

RF-2000MF-RW Mifare Card Reader supports data reading and writing operations of Mifare S50/S70 sector data, Shanghai Fudan FM1208, M12AG08 standard and NXP DesFire EV1 card.



Specification

Hardware	
Operating Frequency	13.56MHz
Chip	Latest NXP highly integrated ISO14443A card reader chip
Reading Range	Serial number up to 11cm, data up to 9cm
Signaling	Buzzer and LED
Protocol	ISO14443A and ISO7816-3
Developer tool	Simple "read card" and "write card" instructions, flexible transmission instructions, PC interface functions and demo programs
Support Cards	Mifare S50 S70 card data block read and write
	FM1208 standard CPU card (Shanghai Fudan) data read and write
	FM12AG08 standard CPU card (Shanghai Fudan) data read and write
	DesFire EV1 CPU card (NXP) data read and write
	PSAM card security module data read and write
	ISO14443-B protocol contactless cards
Port	
Interface	USB-B, plug and play
Power Supply	USB
Physical Characteristics	
Dimensions	120(L)*120(W)*25(H) mm
User Environment	
Operating Temperature	-20 °C to +85 °C
Humidity	5% to 95%, non condensing

	天時科技有限公司
	ACTION-PLUS CO., LTD
	Tel : (852) 2803 0306
	Website: www.action-plus.com.hk

WhatsApp : (852) 9807 7382