



POINTMAN LAMINATOR : N2000

ADD SECURITY TO YOUR CARDS

Packing information

Packaging Content

- : N2000
- : Quick Guide & User Manual
- : Power cord
- : Start Cleaning Kit (Cleaning roller 1 ea, Cleaning Card 1 ea)

Physical Package

- : Carton Size
- : N' Weight
- : G' Weight
- : Palletization
 - Quantity on a pallet
 - Physical Dimension

4. Product Specification



▶ Electronic Features

: Requirement : Input // AC 100V~240V, Output // DC 24V

: Consumption : S// 600W, D// 600W (DC 24V, AC 220 V)

▶ Operating Environment

: Min/Max Operating Temperature (15°C~30°C)

: Humidity : 20% to 65% non-condensing

: Min/Max Storage Temperature (-5 °C~70 °C)

: Storage Humidity : 20% to 70% non-condensing

▶ Laminator Dimension (NL200- no hopper/no stacker)

: 323mm(W) X 214m(L) X 314mm(H)

: Weight : 9.6Kg

▶ Laminator Certification

: CE, FCC, UL

: CCC, VCCI, KCC will be acquired

: RoHS

Optional Feature

▶ Card Hopper for Auto Card Feeding : 100 cards hopper

▶ Output Card Stacker : 150 cards capacity

▶ Security feature : Kensington physical lock slot (default), Enclosure Lock (optional)

▶ Add on Kit for NUVIA printer (N9200, N9300)

Product Specifications

Standard Features

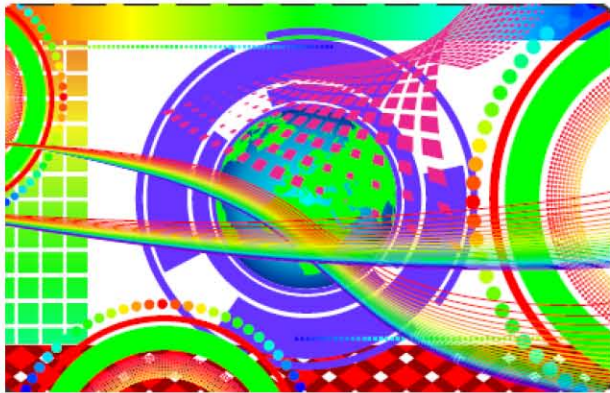
- ▶ **Laminating Technology**
 - : Single -, Dual- Sided Laminating
(Simultaneous Dual-Sided)
 - : Heating Roller
- ▶ **Laminating Speed**
 - : 20 sec/ card (Single or Dual)
- ▶ **Laminating Temperature**
 - : 120°C to 175°C
- ▶ **Laminating Warm-Up Time**
 - : 40 sec (120 °C)
- ▶ **Card Specification**
 - : Card type : ISO 7810 format, CR-80 & CR-79 Size
 - : 85.6 x 53.98 mm (3.370" x 2.125")
 - : Card Thickness : 0.76mm~1.0mm (30mil~40mil)
 - : PVC, Composite PVC
- ▶ **Card Feeding Type**
 - : Manual Feeding (Standard)
 - : 100- card input hopper (0.76mm, 30 mil) (Optional)
- ▶ **Interface**
 - : USB 2.0 , RS232C

Lamination Film:

① Clear & Holographic Patch

- Clear (1.0mil) ; 500 cards/roll

- Registered Hologram (1.0 mil) ; 500 cards/roll



② Clear & Holographic Varnish

2. Product Line-up



2-2. Laminator + Card Printer (Direct Thermal)

■ C. LAMINATOR + NUVIA (DUAL HOPPER) + WITH CREDLE
DUAL CARTRIDGE



2. Product Line-Up



2-2. Laminator + Card Printer (Direct Thermal)

■ B. LAMINATOR + NUVIA (DUAL HOPPER) + WITH CRADLE
UPPER CARTRIDGE



2. Product Line up



2-2. Laminator + Card Printer (Direct Thermal)

■ A. LAMINATOR + NUVIA (SINGLE HOPPER) + WITH CRADLE UPPER CARTRIDGE



Pointman Laminate :

Affordable Card Laminate for Durable and Secured Card Use

- Protect your information to be counterfeited, duplicated and tampered
- Maximize the durability of a card
- Expand the life time of a card up to 5-10 years

Product feature :

- ① Simultaneous Dual Sided Laminating
- ② Faster laminating speed and short warming up time
 - ; Warming up time : Max 40 sec
 - ; Dual sided laminating : about 20 sec
- ③ Easy to USE
 - ; Menu control on LCD
 - ; Easy loading cartridges
 - ; Card Jam -Knob



2. Product Line Up



2-1. Stand Alone : Dual Sided Laminator with Hopper

■ N2000-DH : LAMINATOR DUAL CARTRIDGE + HOPPER (optional)



2. Product Line Up



2-1. Stand Alone : Single Sided Laminator with Hopper

■ N2000 -UH : LAMINATOR SINGLE CARTRIDGE + HOPPER (optional)



2. Product Line-up

2-1. Stand Alone

- Single Sided Laminator (N2000-U0)
- Dual Sided Laminator (N2000-D0)

